

The Map is not the Land

The Map is not the Land: Phase Two of the Plastic Bottle Cap project

We are pleased to announce an exciting new project starting in January 2020. Working with artist [Teresa Paiva \[1\]](#), North Kensington residents will co-design and fabricate a new artwork for the railings outside ACAVA's Maxilla Studios in [Maxilla Walk \[2\]](#).

The Map is not the Land invites participants to consider the local and the global, the personal and the collective and the manmade and the natural, to create a series of interlinking 3D imagined spaces using plastic caps, clay, casting techniques and paint.

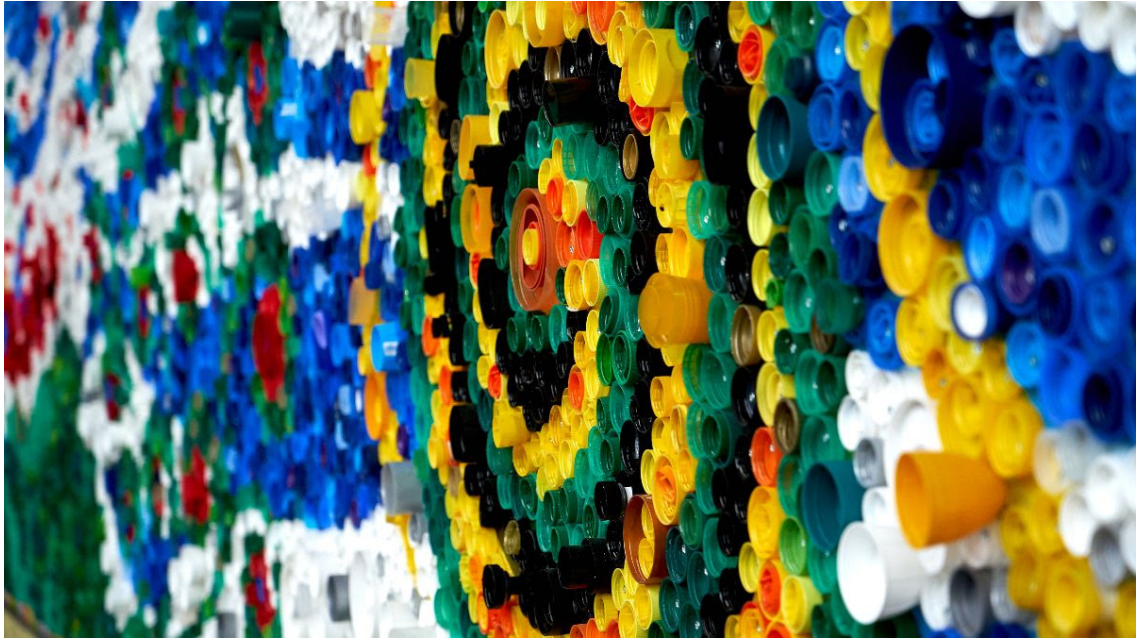
Places on this project are for adults only and booking is recommended.

Workshops will take place on Fridays in January and February at Maxilla Studios, 4 Maxilla Walk W10 6NQ, between 10am-12pm:
17, 24 and 31 January
14 and 28 February

[Follow this link to book a place.](#) [3]

The Map is not the Land

Published on ACAVA (<https://www.acava.org>)



[Back to news](#) [4]

Source URL: <https://www.acava.org/news/map-not-land>

Links

[1] <http://www.teresapaiva.com/>

[2] <https://www.acava.org/studios/building/maxilla-walk>

[3] https://docs.google.com/forms/d/e/1FAIpQLScww5ICR2GSWIIWcsq9JquWUJbnpDUV9au__kmX6X4JPWseoQ/viewform

[4] <https://www.acava.org/news>

Header image: